

Exam Questions 642-035

DCUCT Troubleshooting Cisco Data Center Unified Computing

<http://www.2passeasy.com/dumps/642-035/>



1. Which option is a valid file extension for a CIMC configuration file?

- A. .xml
- B. .json
- C. .txt
- D. .exe
- E. .zip

Answer: A

2. What is the recommended procedure to update Cisco UCS C-Series rack-mount server firmware?

- A. Launch the Cisco UCS Firmware Update Utility from virtual media.
- B. Launch the Cisco UCS Host Update Utility from virtual media.
- C. Launch the Cisco UCS Server Update Utility from virtual media.
- D. Launch the Cisco UCS CIMC Update Utility from virtual media.

Answer: B

3. A customer is troubleshooting QoS in a Cisco UCS domain due to high packet drops in the network. The customer has configured the vNIC and associated QoS policy, and changed the MTU from 1000 to 1200. Packet drops still exist. What is the cause of this issue?

- A. The MTU specified here must be greater than the MTU specified in the associated QoS system class. If this MTU value is less than the MTU value in the QoS system class, packets may be dropped during data transmission.
- B. The MTU specified here must be equal to or less than the MTU specified in the associated QoS system class. If this MTU value exceeds the MTU value in the QoS system class, packets may be dropped during data transmission.
- C. The MTU specified here must be less than the MTU specified in the associated QoS system policy. If this MTU value exceeds the MTU value in the QoS system policy, packets may be not be dropped during data transmission.
- D. The MTU must be optimized and should be changed to fc with the CLI command set mtu fc.

Answer: B

4. Which protocols can be used to send to Cisco TAC (Technical Assistance Center) the show tech-support command output information about the Cisco UCS domain? (Choose two.)

- A. TFTP
- B. FTP
- C. SCP
- D. Telnet
- E. SecureTelnet

Answer: B,C

5. The Core File Exporter automatically exports cores to a remote server as they are generated. Which protocol does it use for this action?

- A. FTP
- B. SCP
- C. SFTP
- D. TFTP

Answer: D

6. In new Cisco UCS release 2.0 installations, what are the default VLAN IDs?

- A. Ethernet VLAN default ID is 4048, FCOE default VLAN ID 4048
- B. Ethernet VLAN default ID is 1, FCOE default VLAN ID is 3968
- C. Ethernet VLAN default ID is 1, FCOE default VLAN ID is 2
- D. Ethernet VLAN default ID is 2, FCOE default VLAN ID is 4047
- E. Ethernet VLAN default ID is 1, FCOE default VLAN ID is 4048

Answer: E

7. Which statement is true about system event logs?

- A. By default, they require manual clearing.
- B. They report operating system crashes and errors.
- C. They are also referred to as system error logs.
- D. They can only be accessed from Cisco UCS Manager.

Answer: A

8. A customer is trying to boot an operating system installed on a Cisco UCS B-Series blade server after a RAID1 cluster migration. The RAID LUN remains in inactive state during and after the service profile association and the server does not boot. What is the cause of this problem?

- A. RAID1 is not supported in cluster migration mode on a Cisco UCS B-Series blade server.
- B. The local disk configuration policy in the service profile on the server is configured with Any Configuration mode rather than RAID1.
- C. The server needs to be booted via SAN in cluster migration to support RAID1.
- D. The Cisco UCS B-Series blade server has older firmware that needs to be updated first.

Answer: B

9. Refer to the exhibit.



Which tab would be the most useful for troubleshooting a blade discovery problem?

- A. Faults
- B. Events
- C. FSM
- D. Servers

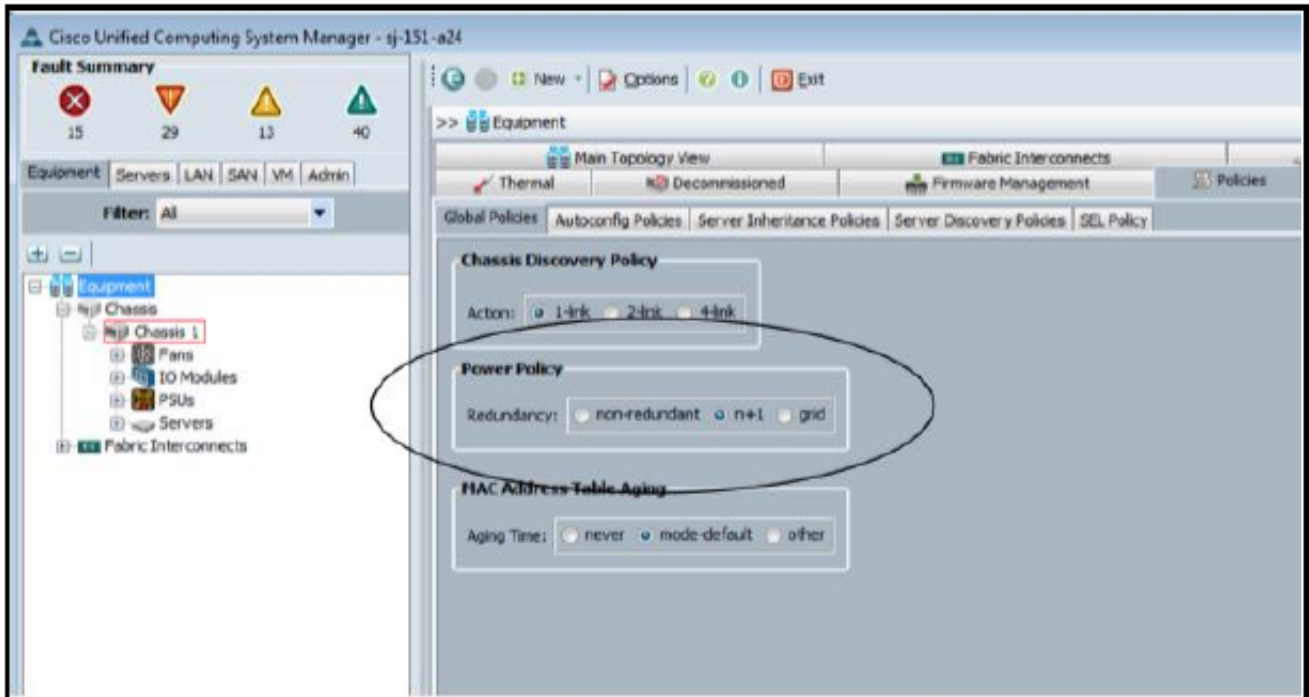
Answer: C

10. How will the Cisco UCS Manager react when all of the FSM tasks fail?

- A. retries for 60 seconds
- B. raises faults and alarms
- C. restarts from the previous known good task
- D. sends an NOC SNMP trap email

Answer: B

11. Refer to the exhibit.



Which type of power policy is shown when referring to a Cisco UCS environment?

- A. chassis
- B. blade server
- C. fabric interconnect
- D. global
- E. switch

Answer: D

12. RBAC is a method of restricting access for a particular user on which two of these? (Choose two.)

- A. roles
- B. realm
- C. locales
- D. RADIUS
- E. LDAP

Answer: A,C

13. You attempt to perform an ESXi update on a Cisco UCS C250 server, but the update does not recognize the NICs. You must perform the update as quickly as possible. Which step must you do first?

- A. Check the UCS compatibility matrix and replace the NIC with a supported one.
- B. Reconfigure the NIC ID on the LOM.
- C. Update the LOM firmware by using the Cisco Host Update Utility.
- D. Update the NIC firmware by using the Cisco Host Update Utility.

Answer: C

THANKS FOR TRYING THE DEMO OF OUR PRODUCT

Visit Our Site to Purchase the Full Set of Actual 642-035 Exam Questions With Answers.

We Also Provide Practice Exam Software That Simulates Real Exam Environment And Has Many Self-Assessment Features. Order the 642-035 Product From:

<http://www.2passeasy.com/dumps/642-035/>

Money Back Guarantee

642-035 Practice Exam Features:

- * 642-035 Questions and Answers Updated Frequently
- * 642-035 Practice Questions Verified by Expert Senior Certified Staff
- * 642-035 Most Realistic Questions that Guarantee you a Pass on Your FirstTry
- * 642-035 Practice Test Questions in Multiple Choice Formats and Updatesfor 1 Year